

Ferrol

SOLID FUEL BOILERS



FERROLI, world player in HVAC market since over 50 years, provides complete solutions for heating, and production of domestic hot water. Gas, oil and solid fuel cast iron boiler have been carefully designed by our engineers and produced in modern foundry and production premises in San Bonifacio, in the north-east of Italy.

> **WOOD AND PELLET FUEL**

Wood is the only sustainable fuel that is easily available with small transformation process. It is also local and sustainable and can be exploited without long transport. Recently solid fuel enjoyed a fair success in Europe.

More users are looking for independence from the sometimes uncertain and onerous supply of hydrocarbon fuels, for protection from power cuts, and for simplicity and low running costs. User who chooses solid fuel boiler also supports a virtuous and neutral environment balance. Wood, which is wisely harvested from forests, releases into the atmosphere, either burnt or naturally decayed, the same quantity of CO₂ it previously removed from the atmosphere as a tree.

Ferrolì offers complete solutions - from pellet, coke, wood boilers for providing heating in detached houses up to complex systems using biomass for district-heating or industrial purposes.

Thanks to its experience and refined technology, Ferrolì adds to solid fuel peculiarities also top performances in terms of quality of combustion, emissions and efficiency.

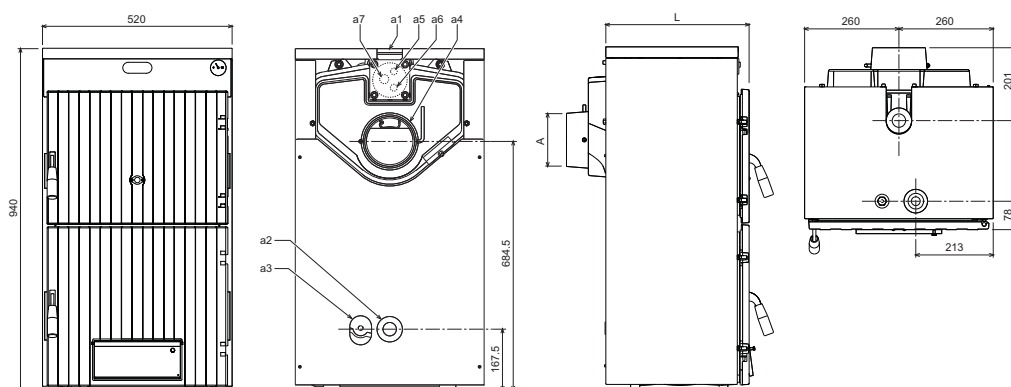
> **FERROLI'S SOLID FUEL RANGE**

SFL / GF N range of residential solid fuel boilers, is Ferrolì's proposal of CO₂ neutral heating systems for houses and small commercial applications.

Ferrolì's solutions are characterised by high efficiency, reliability, easy operation and cheap maintenance. Adding Ferrolì Sun P pellet burner means a comfort that can be programmed in a customised way for the whole week, demanding the user only to fill the capacious pellet holding tank.



- > High yield GG 20 (EN-GJL-200) cast iron solid fuel boiler, fit for wood or coke combustion.
- > Pellet operation after assembling of the burner plate and the pellet burner SUN P.
- > Class 3 efficiency according to EN 303-5.
- > Efficiency until 81% burning wood, thanks to large exchange surface of cast iron sections.
- > Generous combustion chamber, until 128 dm³, which allows burning of large logs and less wood refuelling.
- > Adjustable smokes deflector on back flues outlet.
- > Stainless steel ash tray with easy front access.
- > Thermostatic regulator supplied as a standard.
- > Safety overheating device available as an optional.



KEY

- a1** System delivery
- a2** System return
- a3** System drain cock
- a4** Flue
- a5-a6** Safety coil connections
- a7** Safety coil sheath connection

| MODEL | | | | 3 | 4 | 5 | 6 | 7 |
|--------------------------|--------|--------|--|-----------------|---------|---------|---------|---------|
| Thermal output | Coke | kW | | 22,5 | 32,5 | 42,5 | 52,5 | 62,5 |
| | Wood | kW | | 19,0 | 27,0 | 36,0 | 43,0 | 50,0 |
| | Pellet | kW | | 22,0 | 30,0 | 41,0 | 47,9 | 54,7 |
| Burner matching | | | | SUN P7 | SUN P7 | SUN P12 | SUN P12 | SUN P12 |
| Water content | | | | l | 26 | 30 | 34 | 38 |
| Chamber content | | | | dm ³ | 48 | 68 | 88 | 108 |
| Depth (L) | | | | mm | 423 | 533 | 643 | 753 |
| Chimney diameter | | | | mm | 150 | 150 | 150 | 180 |
| Minimum draught at stack | Coke | Pascal | | 8 | 10 | 15 | 20 | 25 |
| | Wood | Pascal | | 12 | 14 | 16 | 18 | 20 |
| | Pellet | Pascal | | 23 | 25 | 25 | 25 | 25 |
| Dimension door | | | | mm | 384x210 | 384x210 | 384x210 | 384x210 |
| Operating pressure | | | | bar | 4 | 4 | 4 | 4 |
| Weight | | | | kg | 193 | 241 | 289 | 337 |

The following accessories are available as an option specifically for GF N and SFL.

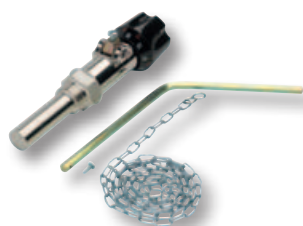
> OVERHEATING SAFETY VALVE AND COIL



The installation of this device is compulsory according to EN 303-5 directive. It consists in a safety valve and a coil. The latter is an exchanger, adequately sized for each model size, to be immersed in boiler's heating water, through a proper niche. The relief valve detects the boiler's temperature through a probe with double sensor. In case boiler's temperature reaches 95°C, the valve releases the excess heat, exchanged in the safety coil.

STANDARD
ON SFL

> THERMOSTATIC REGULATOR

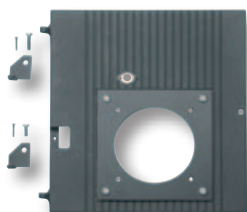


Thermostatic regulator is suitable for operation with wood and coke. Central heating water temperature is kept at setpoint by automatic adjustment of comburent air inlet through a simple but effective mechanical system. Thermostat will decrease air inlet when temperature rises and will open the air deflector when temperature drops down, thus refuelling the flame. This system optimises the quality of combustion and thermal exchange.

> PELLET CONVERSION KIT

GF N - SFL: SINGLE DOOR SOLUTION

It is possible to adapt all GF N or SFL for the installation of the pellet burner. For this purpose a drilled burner door with insulation is available as an option. It is a specific and different one for GF N or SFL. For GF N it replaces the original top wood door whereas for SFL it replaces the lower door.



GF N's optional pellet burner door



GF N modified for pellet operation

SFL: DOUBLE DOOR SOLUTION

For SFL it is possible to adopt a **REVERSIBLE PELLET CONVERSION**. A specific pellet door is hinged on the left side of the boiler, without removing the original wood one, which remains hinged at the right side of SFL. Thanks to this **DOUBLE DOOR SYSTEM** it is possible to switch fuel type with very few, quick operations.



PELLET



FUEL CONVERSION



WOOD